



Three battlefields.

Fredericksburg. Chancellorsville. The Wilderness.

Altogether, almost half a *million* combatants.

Over *78 thousand* casualties.

13 generals killed.

Countless families widowed, orphaned, bereaved.

Below the Rappahannock River in central Virginia lies some of the most fought-over terrain in America. Between 1861 and 1864 the warring armies of the Civil War bitterly and repeatedly contested these lands. As the midpoint between the Union and Confederate capitols this region was not just strategically important, it was an obsession. Through four major military campaigns and countless skirmishes and small engagements men struggled and died here, for their homes, their beliefs, for the ideals they wanted their country to stand for.

It is the mission of Central Virginia Battlefields Trust to preserve these historic landscapes, these places where so many men of North and South sacrificed, where many gave -- in the words of Abraham Lincoln -

"the last full measure of devotion."

Fredericksburg

Today the extreme southern end of the Fredericksburg battlefield presents a decidedly commercial aspect. Beyond the open preserve of Slaughter Pen Farm a modern world of strip shopping centers, commercial and industrial developments and self-store mini-warehouses dominates. The only sign that anything of historic note occurred here is found at the area's major intersection amid all of the traffic and noise of commercial activity. *Pelham's Corner* has been a lonely outpost here with its old stone marker, dedicated by a member of General Thomas "Stonewall" Jackson's staff to the daring of young Confederate artillerist John Pelham, who for a critical hour held back an Army with a single cannon. In 2007 CVBT took ownership of this famous but neglected site, a single acre of historic and commercially desirable real estate. In 2015 our footprint there was tripled by the acquisition of three more lots, all zoned and prepared for commercial use. At 4.5 acres of protected open space the corner now holds more possibilities for public access, and better preserves the historic lines of sight. CVBT is also assisting the Civil War Trust in financing the preservation of a string of nearby parcels across *Benchmark Road* on the southern edge of the Fredericksburg battlefield. Lastly, and on the opposite end of the Fredericksburg defensive line, CVBT has negotiated the preservation of a nearly forgotten artifact of battle. North of the long ridge of Marye's Heights Confederates used a string of steep hilltops to situate artillery units and interconnecting infantry works. Near Mary Washington Hospital CVBT has acquired one of these, an artillery lunette occupied by the *Norfolk Artillery* during the battle of December 13, 1862. Protected by the nearby Rappahannock and the canal that ran behind Fredericksburg, the position was never attacked directly but provided its artillerists an opportunity to enfilade the Union attacks against the Sunken Road and Marye's Heights, adding more deadly iron to the maelstrom of that assault. Today this end of the battlefield has mostly succumbed to new invaders -- medical office parks and town homes. In spite of the challenging terrain development plans had been drawn up to site 38 townhomes on this four-and-a-half acre parcel. This steep site presents challenges for public access but it is a rare chance to preserve surviving field works west of Marye's Heights and within the Fredericksburg city limits.

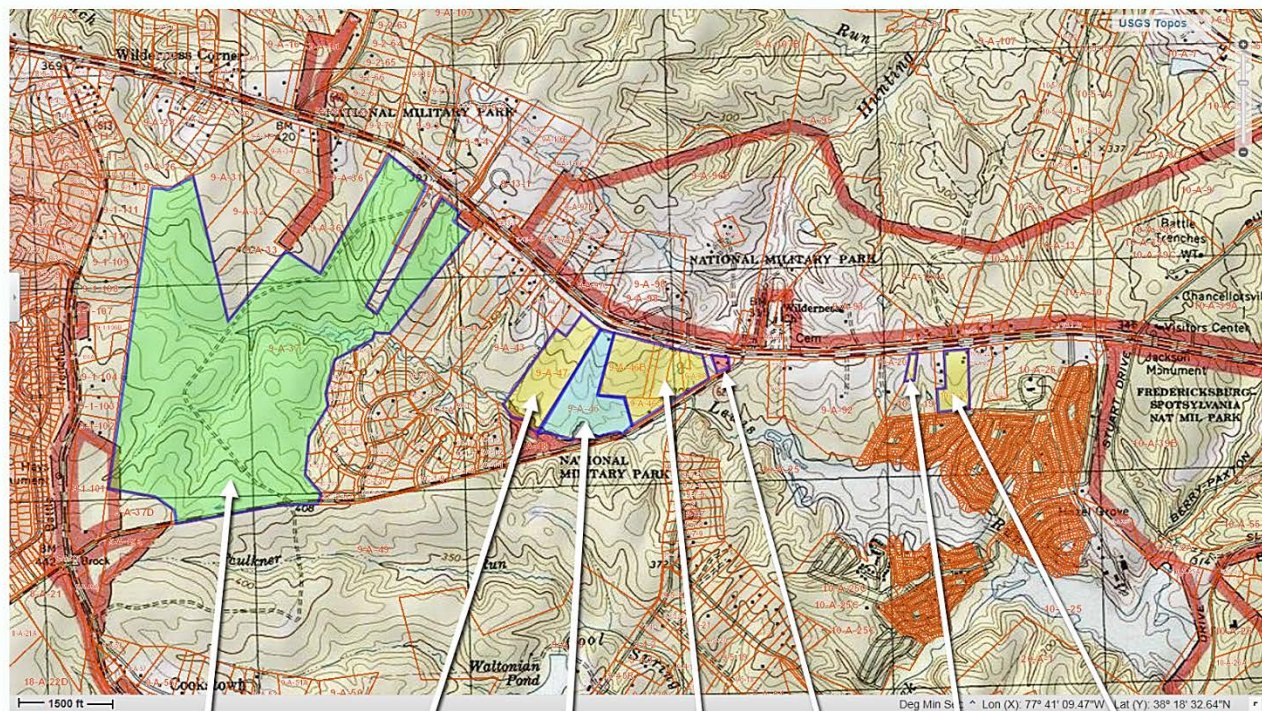


Chancellorsville

Today the Chancellorsville battlefield is a study in contrast. The scene of historic victories in the 19th century for Confederate armies and for battlefield preservationists in the 20th, in the 21st century we find these fields and byways threatened anew. The recent resurgence of real estate development has opened fresh wounds on the battlefield, particularly in the area of the First Day combat. Bulldozers are busily tearing away the surface and model homes overlook battlefield in a residential development near Lick Run. A new fire-and-rescue station on Plank Road is almost

ready to begin the piercing wail of emergency runs. A busy convenience/food store has opened opposite the battlefield entrance, where it draws increased traffic and the red warning glare of brake lights. Further west out Plank Road the prospect is more heartening. CVBT and CWT have been diligently working here to expand preserved battlefield south of Plank Road in the area of Stonewall Jackson's famous Flank Attack. Unlike the north side of the road there are few large holdings to target, rather a patchwork of mostly small parcels, many with single family homes. Making headway has been, and will continue to be, a long-term project requiring patience, strong relationships in the community, and a reputation for trustworthiness and square dealing. Over time CVBT has acquired ten parcels along the south side of Plank Road, most recently our *Stonewall Brigade II* property in April 2016. We have yet another parcel under contract with closing scheduled for January 2017. We are also proudly participating as a major partner in the Civil War Trust's *Chancellorsville-Wilderness Crossroads* project, providing a \$50,000 contribution to seed its pool of matching funds. This 355 acre acquisition protects important battlefield not only in the area of the Flank Attack at Chancellorsville in 1863, but also the chaotic fighting that swirled around the Brock Road/Orange Plank Road intersection a year later during the battle of The Wilderness. This intersection was the spot where Ulysses S. Grant - stalemated in The Wilderness but determined to press on -- inspired wild cheering by his exhausted men as he turned the Army of the Potomac south towards Spotsylvania Court House.

Chancellorsville Battlefield
 Preserved and targeted parcels in Flank Attack area - Plank Road



- Chancellorsville-Wilderness Crossroads
CWT - CVBT
(pending)
- Talley Ridge
CVBT
- Kronenwetter
CWT
- Rodes-Dole
CVBT
- Kinney
CVBT
(pending)
- Stonewall Brigade II
CVBT
(April 2016)
- Stonewall Brigade
CVBT

The Wilderness



It is impossible to visit The Wilderness battlefield today without being distracted by the proximity of modern houses and subdivisions. Where soldiers hugged the earth to escape exposure and certain death, now hulking garbage trucks beep their way through suburban side streets on their weekly rounds. When preservation began here a century ago no one anticipated the intrusion of suburban development into the western reaches of the battlefield, particularly here where the asphalt

fingers of residential cul de sacs stretch out to the earthworks that line Hill-Ewell Drive, the principal route through the national park. But now they are here and we must mitigate their impact however we can. To that end CVBT has begun an initiative to acquire vacant lots at the end of these cul de sacs, thereby expanding the *de facto* buffer between the most-traveled thoroughfares of the park and the modern structures that threaten their historic integrity. In April 2016 we purchased our first residential lot. We are in negotiation for more. It is an effort we consider essential to maintenance of a meaningful battlefield preserve, to prevent park roads and historic earthworks from becoming the back yards of new suburbia. A battlefield should not be the place to park a boat, or to stow garbage bins awaiting their noisy disgorgement. It does no honor to our forebears who fought and died here. The desecration does no honor to we who allow it.

Our fundraising goal is \$81,200.00 to defray the costs of *all* of these important battlefield acquisitions. Please help in the fight to save America's historic legacy, and the memory of those who devoted their "last measure" to the long, bloody epic of this great nation's rebirth.

Join our fight to preserve these historic places, to seize these opportunities.

Make your donation today to **Central Virginia Battlefields Trust**.

Thank you.

www.cvbt.org



Please note: Central Virginia Battlefields Trust will make every effort to see that funds raised from this appeal will go to the battlefields named. In the event that funds are raised in excess of the amount required, your donation will be put to where the need is greatest. Thank you!